



100% MADE IN THE USA

FullMetalPatch

INSULATION BAR WITH ALUMINUM OUTER JACKET

APPLICATIONS

It perfectly completes any installation job where copper line sets are involved or replace old or damaged insulation. An aluminum layer placed on top of polyethylene insulation foam and protective skin makes product extremely durable and resistant. Works for every air conditioning application such as ductless mini-splits, VRF, heat pumps and unitary systems.

TECHNICAL SPECS

Polyethylene closed cell foam: assures thermal insulation from surroundings

ASTM C 1427-07 compliant
Type I (tubular)

Grade I (insulation material for use on typical commercial system non-crosslinked)

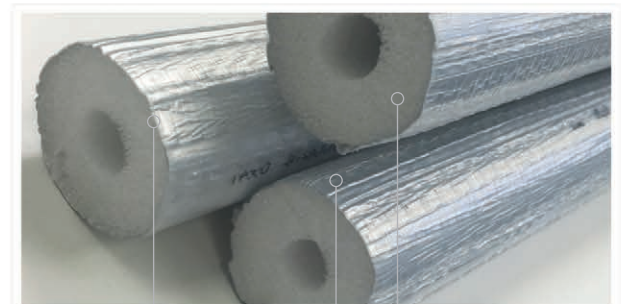
Low-density polyethylene foam: closed cells foam, CFC and HCFC gas free

Water vapor permeability: ASTM E96-00 compliant
Working temperature: ASTM C 1427-07 compliant

Wall thickness: 1/2" and 3/4"

Surface burning characteristics: UL 94, top rated – UL 723, ASTM E84 (25/50) compliant, flame and Spread Index less than 25 and Smoke Development Index less than 50 as tested according to UL 723

R-Value: between 6.0 and 4.0 (depending on insulation diameter)



Aluminum protective layer Foam Insulation
External protective layer

SPECIAL FEATURES

Aluminum protective layer: aluminum layer provides extremely high durability and protection

Exterior Jacket: additional polyethylene outer jacket protects aluminum from getting damaged

Foot Marking: insulation incrementally marked by every foot to ensure accurate initial unit charge

R410a approved: FullMetalPatch can be used in applications where high-pressure gases are used as refrigeration source

UV resistant: FullMetalPatch is UV resistant

Paintable: the insulation can be painted to match the surroundings

PDM US recommends product installation under plastic duct to protect it from severe weather conditions, accidental damages or theft.



100% MADE IN THE USA

FullMetalPatch

INSULATION BAR WITH ALUMINUM OUTER JACKET

TRY IT, LOVE IT.

PRODUCT TABLE

PDM US PART NUMBER	DIAMETER	INSULATION - LENGTH	PIECES (per individual box)	BOXES (per pallet)
F100.FMP140312	1/4	1/2 - 3FT	10	16 BOXES
F100.FMP380312	3/8	1/2 - 3FT	8	16 BOXES
F100.FMP120312	1/2	1/2 - 3FT	7	16 BOXES
F100.FMP580312	5/8	1/2 - 3FT	5	16 BOXES
F100.FMP340312	3/4	1/2 - 3FT	4	16 BOXES
F100.FMP780312	7/8	1/2 - 3FT	3	16 BOXES
F100.FMP140612	1/4	1/2 - 6FT	82	15 BOXES
F100.FMP380612	3/8	1/2 - 6FT	62	15 BOXES
F100.FMP120612	1/2	1/2 - 6FT	58	15 BOXES
F100.FMP580612	5/8	1/2 - 6FT	44	15 BOXES
F100.FMP340612	3/4	1/2 - 6FT	35	15 BOXES
F100.FMP780612	7/8	1/2 - 6FT	35	15 BOXES